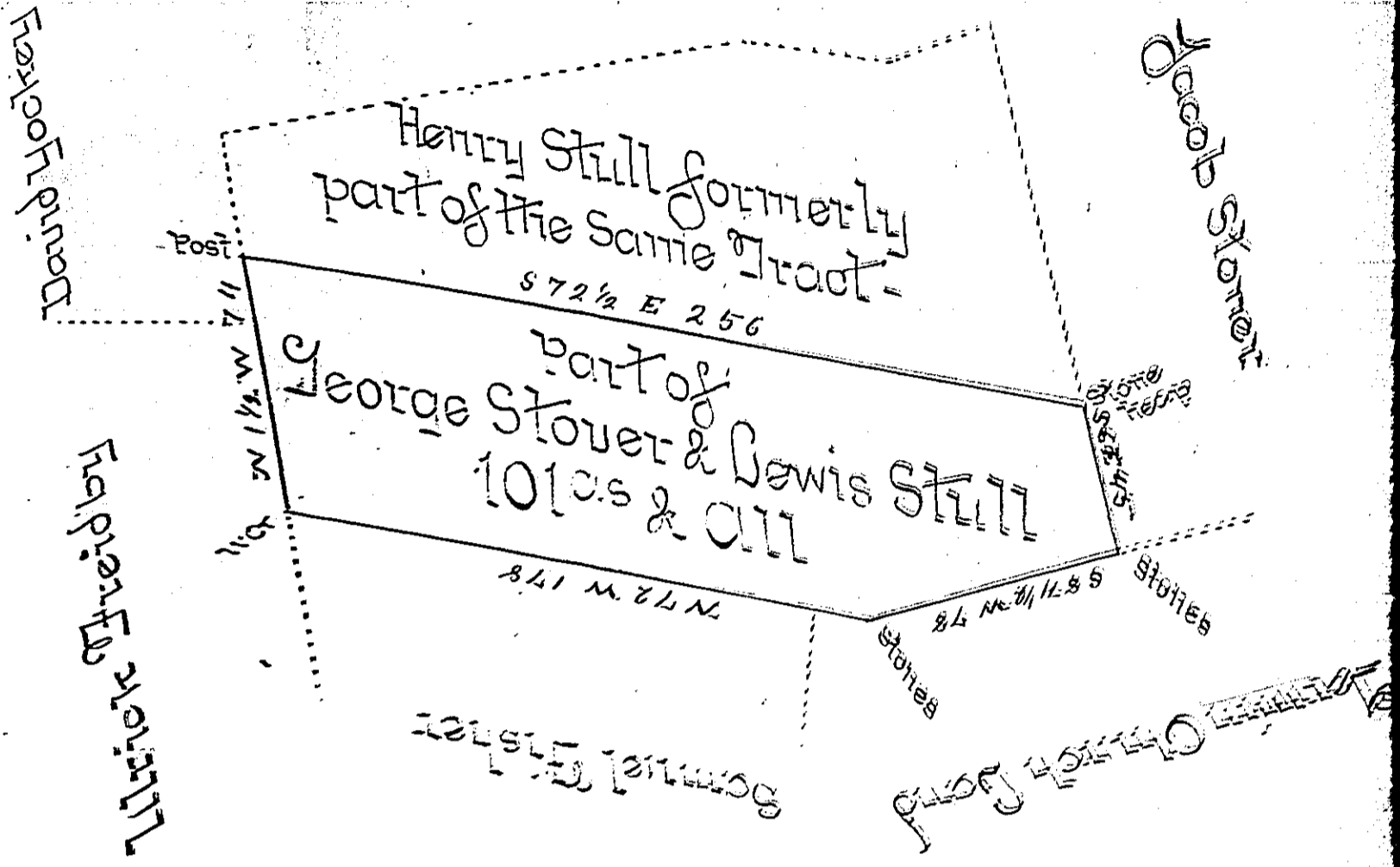


101  
72 1/2  
28 1/2



of tract of land of some extent in Washington  
 County Franklin County containing one hundred and  
 one acre and a portion of 27.00 acres of the  
 part of a tract of some extent and which is  
 known as the same and which was surveyed in  
 1800 by two men whose names were George  
 Stover and Lewis Still and which was  
 in 1800 divided into two parts of  
 one of said parts for Lewis Still and the other

To the Clerk of the Court  
 of the County of Franklin

Thomas J. D.S.

IN TESTIMONY that the above is a copy of the original remaining on file in  
 the Department of Internal Affairs of Pennsylvania, made  
 conformably to an Act of Assembly approved the 16th day of  
 February, 1838, I have hereunto set my Hand and caused  
 the Seal of said Department to be affixed at Harrisburg,  
 this 7th day of                      1899.

*James W. Latta*  
 Secretary of Internal Affairs